

YSGOL GYNRADD GYMRAEG Y LOGIN FACH

Heol Roseland, Waunarlwydd, Abertawe SA5 4ST

FFÔN / TELEPHONE: 01792 874399
E-BOST / E-MAIL: ygg.loginfach@swansea-edunet.gov.uk
GWEFAN / WEBSITE: www.yloginfach.co.uk
TRYDAR / TWITTER: @LoginFach



2/12/2024

Yr wythnos yma yn Ysgol Gymraeg Y Login Fach

This week at Ysgol Gymraeg Y Login Fach

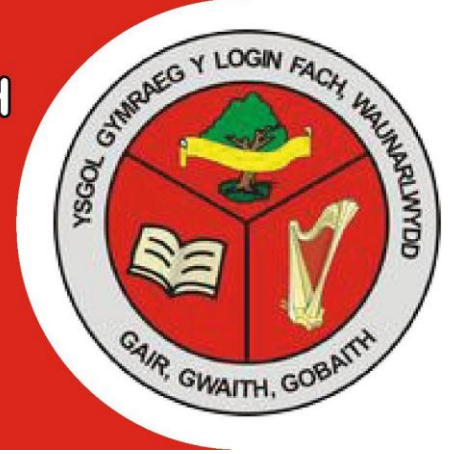
Dydd Llun / Monday 2/12/2024	Gwersi Cymraeg i Oedolion - 9yb-11yb / Welsh Lessons for Adults - 9am-11am Côr yr Ysgol – BI 2 i FI 6 - Amser cinio / School Choir – Yrs 2 to 6 - Lunch time Dyddiad cau tocynnau Cyngerdd Nadolig BI3a4 – 1yh. / Closing date for tickets Yr 3and 4 Christmas Concert – 1pm. Bydd unrhyw sbarion ar werth o 6y.h. ar sail “Cyntaf I’r Felin” (sQuid yn unig) / Any spares available from 6pm on “first come first served” basis (sQuid only) DIM CLYBIAU AM WEDDILL Y TYMOR / NO AFTERSCHOOL CLUBS FOR THE REMAINDER OF THE TERM
Dydd Mawrth / Tuesday 3/12/2024	Gwersi Drymiau / Drum Lessons Gwersi Telyn / Harp Lessons
Dydd Mercher / Wednesday 4/12/2024	BI 1 – 6: Sioe “Culhwch ac Olwen” (nôl erbyn cinio) / Yrs 1 to 6: “Culhwch ac Olwen” show (back by lunchtime) – Theatr y Ffwrnes
Dydd Iau / Thursday 5/12/2024	Gwersi Gitar a Iwcalili / Guitar and Ukulele Lessons Cyngerdd Nadolig BI 3 a 4 (1.30 yh a 5 yh- Capel Seion) / Yr 3 and 4 Christmas Concert (1.30pm and 5pm at Capel Seion)
Dydd Gwener / Friday 6/12/2024	Meithrin a Derbyn – Sioe Cyw (nôl erbyn cinio) / Nursery and Reception – “Cyw” Show (back by lunchtime) – Neuadd y Gwendraeth BI6 Nofio / Yr 6 Swimming Dyddiad cau tocynnau Cyngerdd Nadolig BI 1a2 / BI 5a6 – 1yh. / Closing date for tickets Yr 1&2 and Yr 5&6 Christmas Concert – 1pm. Bydd unrhyw sbarion ar werth o 6y.h. ar sail “Cyntaf I’r Felin” (sQuid yn unig) / Any spares available from 6pm on “first come first served” basis (sQuid only)

|

YSGOL GYNRADD GYMRAEG Y LOGIN FACH

Heol Roseland, Waunarlwydd, Abertawe SA5 4ST

FFÔN / TELEPHONE: 01792 874399
E-BOST / E-MAIL: ygg.loginfach@swansea-edunet.gov.uk
GWEFAN / WEBSITE: www.yloginfach.co.uk
TRYDAR / TWITTER: @LoginFach



- Tocynnau Raffl:** Mae pob plentyn wedi cael llyfryn o docynnau raffl i chi werthu. Os hoffech ragor, cysylltwch a'r Swyddfa'r. Byddwn yn tynnu'r raffl yn y Noson Garolau o Gwmpas y Goeden ar 16/12/24. Aeth Parentmail yn gofyn am gyfraniadau ar 21/11/24, felly os hoffech gyfrannu rhoddion ar gyfer gwobrau, byddem yn ddiolchgar iawn.
 - Clybiau ar ôl ysgol:** Mae gennym nifer o gyngherddau Nadolig dros y pythefnos nesaf felly ni fydd clybiau ar ôl ysgol am weddill y tymor (heblaw am "Clwb Hwyl"). Byddwn yn aildechrau ym mis Ionawr.
 - Presenoldeb:** Mae nifer o achosion gwahol o salwch yn yr ysgol ar hyn o bryd. Gofynnwn yn garedig i chi gadw at y rheol 48awr os oes yna achosion o ddolur rhydd a / neu chwydu. Mae hanfodol i chi ein hysbysu o absenoldeb eich plentyn gan roi rheswm am yr absenoldeb hefyd. Mae hyn yn ofynnol ar gyfer ein cofnodion i Sir Abertawe.
 - Lluniau ysgol – Unigol a theuluoedd:** Rydym wedi clywed bod rhai ohonoch wedi eich siomi gyda'r lluniau. Ar ôl gweld y lluniau, rydym wedi cwyno i'r cwmni ac maent wedi cytuno dod nol i ailwneud y lluniau. Os nad ydych yn hapus gyda'ch lluniau, ewch i'r ddolen cyswllt isod er mwyn nodi os hoffech lluniau newydd. Os ydych chi'n hapus gyda'ch lluniau, does dim angen ymateb. Bydd y cwmni yma ar Ddydd Mawrth, felly bydd angen ein hysbysu trwy'r ddolen erbyn 1yh prynhawn Dydd Llun.
<https://forms.office.com/e/JdnZfiuMRE>

Rydym hefyd yn ymwybodol bod rhai ohonoch wedi colli'r cyfle i brynu'r lluniau dosbarth a'r llun ysgol gyfan a gymerwyd yn yr haf. Mae rhain dal ar gael i'w prynu felly defnyddiwch y ddolen isod ynghyd a'r côd ar gyfer dosbarth eich plentyn llynedd.
- Raffle tickets:** Every child has come home with a book of raffle tickets to sell. If you would like more, please contact the Office. The raffle will be drawn at the "Carols Around the Christmas Tree" evening on 16/12/24. A separate Parentmail was sent on the 21/11/24 asking for items as raffle prizes. Any donations would be gratefully received.
 - After school clubs:** We have a number of Christmas concerts arranged over the next couple of weeks, as a result of which there are no after school clubs for the rest of term (apart from "Clwb Hwyl"). Clubs will resume in January.
 - Attendance:** There are a number of different sicknesses circulating at school at the moment. We kindly request that you abide by the 48 hour rule in instances of diarrhoea and / or vomiting. It is essential that you let us know if your child is absent, and give us a reason for the absence, as this information is required by the Council.
 - School photos – individuals and family groups:** We have heard that some of you were disappointed with the photos. Having seen them, we have complained to the company and they have agreed to come out and re-take photos. If you were unhappy with your photo(s), please let us know that you want which photo(s) you want taken again by clicking on the link below. If you were happy with your photo(s) there is no need to respond. The company will be here on Tuesday, so you will need to let us know your requirements by 1pm on Monday afternoon.
<https://forms.office.com/e/JdnZfiuMRE>

We are also aware that some of you missed the chance to purchase the class and whole school photos taken in the summer. These are still available to order by clicking the link below, and inputting the code for your child's year group in 2023-24.

YSGOL GYNRADD GYMRAEG Y LOGIN FACH

Heol Roseland, Waunarlyydd, Abertawe SA5 4ST

FFÔN / TELEPHONE: 01792 874399
E-BOST / E-MAIL: ygg.loginfach@swansea-edunet.gov.uk
GWEFAN / WEBSITE: www.yloginfach.co.uk
TRYDAR / TWITTER: @LoginFach



www.clickfoto.co.uk

Meithrin AM	X6CXN3Q6F5
Meithrin PM	NJW847VMQ8
Derbyn	6P5XDDWAG7
Blwyddyn 1	29EDJNURSZ
Blwyddyn 2	PY2GUA9Z7A
Blwyddyn 3	VBZNMHSSE3
Blwyddyn 4	EVWAJW4VQL
Blwyddyn 5	Y5HA7Y9D5M
Blwyddyn 6	62M53BJG08

Llun panoramic 2023-24 3QGX8MLQ

- **BI5 a 6:** Dydy hi ddim yn rhy hwyr i gofrestru diddordeb i'ch plentyn fod yn ran o'r Sioe Cynradd yn yr Eisteddfod Dur a Mor 2025. Mae rhagor o sesiynau cyflwyno i ddod felly danfonwch neges e-bost at y cyfeririad isod i gofrestru eich presenoldeb:
margam@theatr-nanog.co.uk
- **Asda Rewards:** Un dydd yn unig sydd ar ôl i ychwanegu at gyfrif Asda Rewards yr ysgol. Ar hyn o bryd mae £236.06 yn ein cyfrif. Diolch yn fawr i chi sydd wedi bod yn gwario yn Asda! Cofiwch sganio os ydych yna heddiw neu yfory!

<https://www.asda.com/cashpotforschools?scrllybrkr=e73a0d34>

- **Dyddiadau i'r calendr:**
 - 10/12/24 – *Cyngerdd Nadolig BI 5 a 6 1.30yp a 5.00yp*
 - 11/12/24 – *Cyngerdd Nadolig BI 1 a 2 1.30yp a 5.00yp*
 - 12/12/24 – *Cyngerdd y Derbyn 9.45yb*
 - 12/12/24 – *Diwrnod Cinio Nadolig a Siwmperi Nadolig*
 - 13/12/24 – *Cyngerdd y Meithrin 9.45yb*
 - 16/12/24 – *Carolau o gwmpas y Goeden 5yp (iard yr ysgol) – achlysur CRA*

www.clickfoto.co.uk

Meithrin AM	X6CXN3Q6F5
Meithrin PM	NJW847VMQ8
Derbyn	6P5XDDWAG7
Blwyddyn 1	29EDJNURSZ
Blwyddyn 2	PY2GUA9Z7A
Blwyddyn 3	VBZNMHSSE3
Blwyddyn 4	EVWAJW4VQL
Blwyddyn 5	Y5HA7Y9D5M
Blwyddyn 6	62M53BJG08

Whole School Group 3QGX8MLQ

- Yr 5 / 6: It is not too late to register your child to be part of the Primary Schools' Show at Eisteddfod Dur a Mor 2025. There are more introductory sessions coming up so do send an email to the following address to register your interest:
margam@theatr-nanog.co.uk
- **Asda Rewards:** There is just one day left to add to the school's Asda Rewards account. At the moment we have £236.06 in the account. Many thanks to those of you who have been spending in Asda! Do remember to scan if you are there today or tomorrow and add to this total!

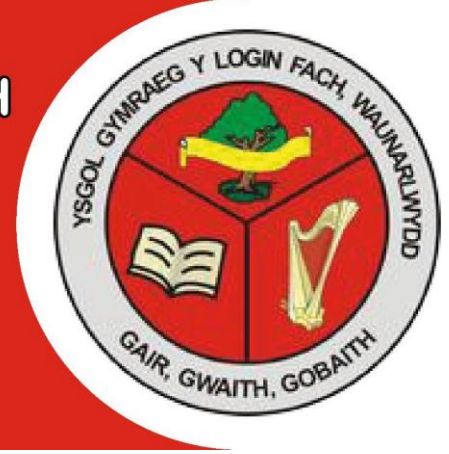
<https://www.asda.com/cashpotforschools?scrllybrkr=e73a0d34>

- **Dates for the calendar:**
 - 10/12/24 – Year 5 & 6 Christmas Concert 1.30pm and 5.00pm
 - 11/12/24 – Year 1 & 2 Christmas Concert 1.30pm and 5.00pm
 - 12/12/24 – Reception Concert 9.45am
 - 12/12/24 – Christmas Dinner Day and Christmas Jumpers
 - 13/12/24 – Nursery Concert 9.45am
 - 16/12/24 – Carols Around the Tree 5pm (schoolyard) – PTA event

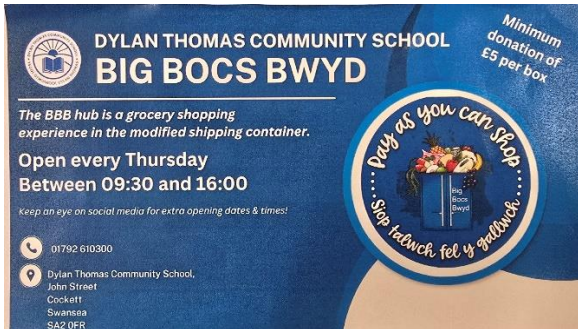
YSGOL GYNRADD GYMRAEG Y LOGIN FACH

Heol Roseland, Waunarlwydd, Abertawe SA5 4ST

FFÔN / TELEPHONE: 01792 874399
E-BOST / E-MAIL: ygg.loginfach@swansea-edunet.gov.uk
GWEFAN / WEBSITE: www.yloginfach.co.uk
TRYDAR / TWITTER: @LoginFach



- **Banciau Bwyd: Gweler isod am gymorth banc bwyd.**

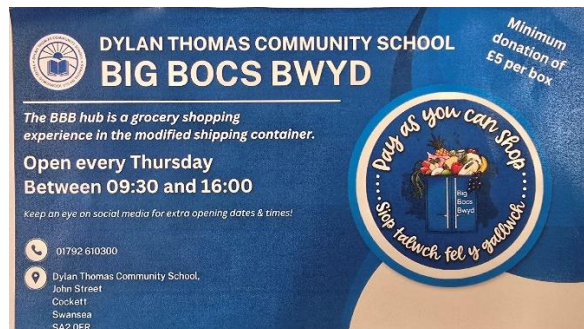


Yn ogystal a hyn, mae'r North Gower Food Hub hefyd yn cynnig cymorth i deuluoedd yr ardal (ag eithrio Tregwyr, Gorseinon a Chila gan fod banciau bwyd eraill ar gyfer yr ardaloedd hyn). Defnyddiwch y doleni isod am fwy o wybodaeth:

Facebook: <https://www.facebook.com/northgowerfoodhub/>
Gwefan: <https://northgowerfoodhub.wordpress.com/>

- **Cofiwch wirio'r calendr ar wefan yr ysgol.** <https://www.yloginfach.co.uk/>
- **Bwydlen dyddiol y cinio ysgol – Gwiriwch hyn yn aml a thrafodwch yr opsiynau gyda'ch plentyn:** <https://www.swansea.gov.uk/primaryschoolmenuprintversion>

- **Food banks: Please see below for food bank information**



In addition to this scheme, the North Gower Food Hub also offers help to families in the area (excluding Gowerton, Gorseinon and Killay which have their own food banks). More information can be found by following these links:

Facebook: <https://www.facebook.com/northgowerfoodhub/>
Website: <https://northgowerfoodhub.wordpress.com/>

- Remember to check the school website for updates to the calendar. <https://www.yloginfach.co.uk/>
- Daily lunch options link: Please check this and discuss the options with your child: <https://www.swansea.gov.uk/primaryschoolmenuprintversion>

Mwynhewch y penwythnos / Enjoy the weekend

Yn ddiffuant / Yours faithfully,

Mrs Katrin Parkhouse,

Pennaeth / Headteacher